



# > ELECTRONIC METERS WITH OVAL GEARS

## K200 / K400 / K603-H / K604

**K200 / K604** electronic meter for diesel fuel

**K603-H** electronic meter for diesel fuel

**K400** electronic meter for oil, diesel fuel, windscreen

### APPLICATION :

For control and measurement for products in the private distribution of low, medium and high viscosity fluids as fuel, oils for lubrication and other special fluids compatible with construction materials.

These products are suitable for installations in both stationary systems, on fluid transfer and distribution lines, and in mobile applications, as an accessory for delivery valves and nozzles, and for all other industrial applications that require fluid delivery control.

### DESCRIPTION :

The oval gear measuring principle offers high precision and low pressure losses. Compact and lightweight design makes them easy to install.

Indicator : partial with 5 digits, and total with 8 digits without reset

Supplying energy with 2 batteries 1,5 V

K200 and K400 :

- Inlet and outlet lined with female thread

K603-H and K604 :

- Union flange
- Integrated filter in suction
- Flow indicator

### COMPONENTS :

Body with measuring chamber : Aluminum

Oval gears : Acetal resin

### TECHNICAL CHARACTERISTICS :

Repeatability : 0,2 %

Precision :  $\pm 0,5$  % in flow rate range after calibration

Pressure loss < 0,5 bar at max flow rate



K200



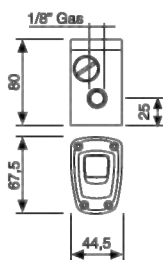
K400



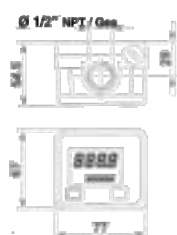
K6



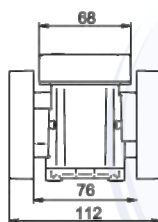
K604



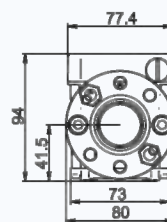
K200



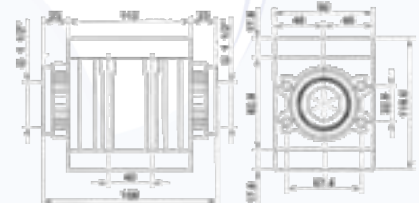
K400



K603-H



K604



REF	FOR	FLOW RANGE	INLET	WEIGHT	MAX PRESSURE	DIMENSIONS
K200	Diesel fuel	1 to 2,5 l/min	1/8" F	0,6 kg	550 bars	310 x 170 x 55 mm
K400	Oil, diesel fuel, windscreen	1 to 30 l/min	1/2" F	0,5 kg	70 bars	80 x 80 x 75 mm
K603-H	Oil	6 to 60 l/min	3/4" F	1,6 kg	70 bars	200 x 120 x 140 mm
K604	Oil, diesel fuel, windscreen	15 to 150 l/min	1"1/2 F	3,2 kg	20 bars	200 x 120 x 140 mm