



> ELECTRONIC PULSE METERS WITH OVAL GEARS

K200-I / K400-I / K604-I / K603-I / K700-I / K603H-I / K24-I

- K200-I** electronic meter for diesel fuel and oil
- K400-I / K604-I / K700-I** electronic meter for diesel fuel, oil and antifreeze
- K603-I** electronic meter for diesel fuel and antifreeze
- K603H-I** electronic meter for oil and antifreeze
- K24-I** electronic meter for diesel oil, water and windscreen

APPLICATION :

For control and measurement for products in the private distribution of low, medium and high viscosity fluids as fuel, oils for lubrication and other special fluids compatible with construction materials.

These products are suitable for installations in both stationary systems, on fluid transfer and distribution lines, and in mobile applications, as an accessory for delivery valves and nozzles, and for all other industrial applications that require fluid delivery control.

DESCRIPTION :

The oval gear measuring principal offers high precision and low pressure losses. Compact and lightweight design makes them easy to install.

COMPONENTS :

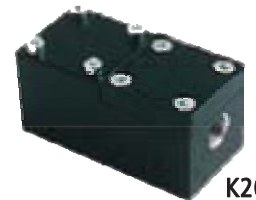
- Body with measuring chamber : Aluminum
- Oval gears : Acetal resin - except K24-I : Polypropylene

TECHNICAL CHARACTERISTICS :

- Repeatability : 0,2 %
- Precision : $\pm 0,5$ % in flow rate range after calibration
- Pressure loss < 0,5 bar at max flow rate



K400-I



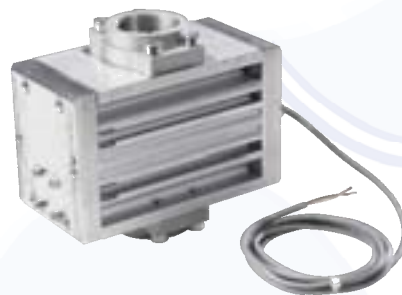
K200-I



K604-I



K24-I



K700-I



K603-I

REF	FOR	FLOW RANGE	INLET	WEIGHT	MAX PRESSURE	PULSER	DIMENSIONS
K200-I	Diesel fuel, oil	0,1 to 2,5 l/min	1/4" BSP	0,5 kg	30 bars	1400 p/liter	130 x 65 x 108 mm
K400-I	Diesel fuel, oil, antifreeze	1 to 30 l/min	1/2" BSP	1,1 kg	70 bars	100 p/liter	300 x 160 x 110 mm
K604-I	Diesel fuel, oil, antifreeze	15 to 150 l/min	1"1/2 BSP	3,2 kg	20 bars	26 p/liter	200 x 120 x 140 mm
K603-I	Diesel fuel, antifreeze	10 to 100 l/min	1" BSP	2,6 kg	30 bars	35 p/liter	200 x 120 x 140 mm
K700-I	Diesel fuel, oil, antifreeze	25 to 250 l/min	2" BSP	5,5 kg	20 bars	14 p/liter	280 x 160 x 140 mm
K603H-I	Oil, antifreeze	6 to 60 l/min	3/4" BSP	2 kg	70 bars	33 p/liter	200 x 120 x 140 mm
K24-I	Diesel fuel, water, windscreen	5 to 120 l/min	1" BSP	0,5 kg	20 bars	92 p/liter	113 x 61 x 75 mm